

**STEPHEN & CO.**

CHARTERED SURVEYORS

**01934 - 621101**

ESTATE AGENTS

VALUERS

AUCTIONEERS

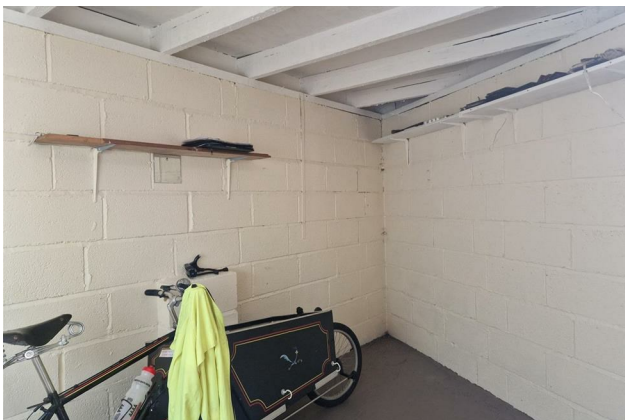
BLOCK MANAGEMENT

Established 1928



**LOCK UP STORE, TOTTERDOWN ROAD,  
WESTON SUPER MARE, BS23 4LH**

**£8,000**



**13 & 15A WATERLOO STREET, WESTON SUPER MARE, BS23 1LA**

**[www.stephenand.co.uk](http://www.stephenand.co.uk)**

**[post@stephenand.co.uk](mailto:post@stephenand.co.uk)**



**The Property  
Ombudsman**

**Rare opportunity to acquire a Lock-Up Store of block construction under a recently renewed flat roof, suitable for a variety of uses (subject to obtaining any necessary consents)**

**The store is located on the corner of Totterdown Road and Dumfries Place in the South Ward of Weston.**

### **Vacant Possession**

#### **Accommodation:**

(with approximate measurements)

#### **Entrance:**

Gate leading to small courtyard with door to:-

#### **Lock-Up Store:**

14'9" narrowing to 8'5" x 8'2" (4.50m narrowing to 2.57m x 2.49m)

#### **Tenure:**

Freehold

#### **Data Protection:**

When requesting a viewing or offering on a property we will require certain pieces of personal information from you in order to provide a professional service to you and our client. The personal information you have provided to us may be shared with our client, the seller(s), but it will not be shared with any other third parties without your consent. More information on how we hold and process your data is available on our website - [www.stephenand.co.uk](http://www.stephenand.co.uk)

#### **Anti-Money Laundering**

Please note that under Anti-Money Laundering Legislation we are required to obtain identification from all purchasers and a Sales Memorandum cannot be issued until this information is provided

The Agent has not tested any apparatus, equipment, fixtures and fittings or services and so cannot verify that they are in working order or fit for the purpose. A Buyer is advised to obtain verification from their Solicitor or Surveyor.. Items shown in photographs are NOT included unless specifically mentioned within the sales particulars. They may however be available by separate negotiation. Buyers must check the availability of any property and make an appointment to view before embarking on any journey to see a property.

### **Ground Floor**

Approx. 9.0 sq. metres (96.6 sq. feet)



**Total area: approx. 9.0 sq. metres (96.6 sq. feet)**

Floor plans are for illustrative purposes only and not to scale.  
Whilst every effort is made to ensure they are as accurate as possible interested parties must satisfy themselves by inspection or otherwise of their accuracy.  
Plan produced using PlanUp.